

● Artist's impression



● Artist's impression

The Jacaranda will feature 66 villas on 8.5ha of sloping lots offering views overlooking the Gold Coast

The natural choice

WHEN Peter McLean, the co-developer of the \$40 million Jacaranda residential estate, first set his sights on the piece of real estate he immediately envisioned stylish homes among the natural bushland of Mudgeeraba.

Mr McLean said what he liked most about the Jacaranda site was the sloping contours and the lush greenery.

"It's such a magnificent piece of land and one that's extremely rare to find these days, so from day dot it was my aim to ensure that as much of the natural state of the site was retained as possible," he said.

"Jacaranda only comprises 66 villas, which are being constructed on 8.5ha of elevated sloping lots and offer magnificent views overlooking the Gold Coast."

Forgan-Smith Architects managing director Greg Forgan-Smith said Jacaranda provided quality large homes in a natural bushland setting.

"Unlike other residential projects and bushland estates on the Coast, the developer of Jacaranda has ensured the preservation of the surrounding flora," he said.

"All the five designs are open plan, with ventilation a key feature to take advantage of the views and the high ceilings to create a feeling of openness.

"A specific design feature, which is not usually found in homes that are built on a sloping site, is that the master bedroom is on the same level as the living area and laundry."

Mr Forgan-Smith said the feature had become a popular trend among families and retirees.

"This style of the residence minimises vertical travel within a home, so it's perfect for families or couples as it provides space and privacy for

mum, dad, children and guests," he said.

"The guests and children's quarters are downstairs, and in some cases where the slope has provided the opportunity, large media rooms are adjacent to the bedrooms.

"The benefit for retirees is the ease and convenience of not having to climb up and down the stairs regularly."

Three or four-bedroom homes with study and media-room options are available and range in size from 220sq m to 255sq m and are from \$535,000 to \$625,000.

Jacaranda incorporates resort-style facilities in the estate, including a 17.5m pool, spa, sauna, gym, barbecue, meeting room with large LCD television and kitchen bar.

The estate is being developed by Gold Coast property industry veteran and director of Pacific Equity Peter McLean and his joint-venture business partner David Baird.

A fully furnished display villa is at 45 Lancashire Drive, Mudgeeraba, and open seven days a week from 10am to 5pm.

For more information call Cathy Manley on 5522 9200.

design

Villas at Jacaranda

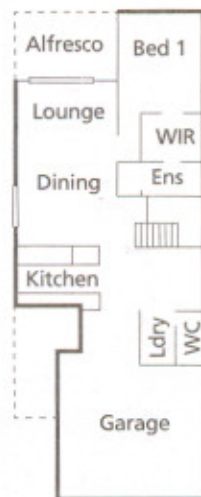
builder

Peter McLean and David Baird

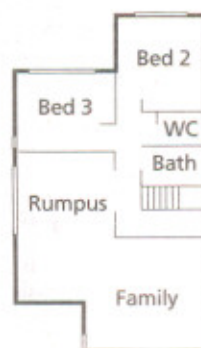
features

Estate facilities include 17.5m pool, spa, sauna, gym, barbecue, meeting room and kitchen bar. Villas feature three or four bedrooms with study and media-room options

First level



Second level



Villas at Jacaranda

Editor

Elizabeth Campbell - 5584 2219
campbelle@gcb.newsltd.com.au

Advertising

Faye Stebbing - 5584 2174
home@gcb.newsltd.com.au

Editorial

Dean Publications - 5591 5623

Cover

Homeowners are choosing to recreate rooms with striking colours and luxurious furnishing fabrics. See story page 87

Cover picture - Designers Guild

home